

Reduced Glare

# VECO

## DOWNLIGHT SERIES

A series of downlights with a simplistic design that is available in various sizes, shapes, and finishing. Incorporating ELR's signature modular concept design, LED modules are fully interchangeable with various choices to provide optimal illumination for all kinds of spaces.



Future proof with upgradeable module



Multiple accessories options

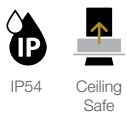


Trim thickness < 2mm



Fixture size of a tennis ball Ø68mm

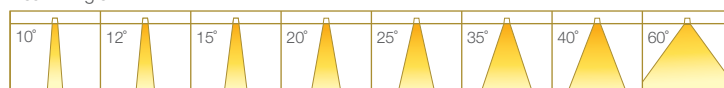
### Fixture Features



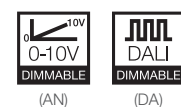
### Module Colour Temperature Variation



#### Beam Angle



### Driver Dimming Variation



# VECO 4

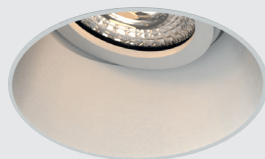
RECESSED ROUND FIX / TILT DOWNLIGHT LUMINAIRE



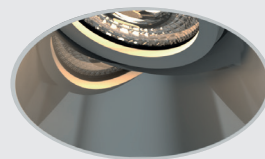
#ROUND  
#FIX  
#TRIM



#ROUND  
#FIX  
#TRIM



#ROUND  
#TILT  
#TRIMLESS



#ROUND  
#TILT  
#TRIMLESS

## TECHNOLOGY AND FEATURES



Advanced Thermal Protection System



Low Flicker, No Risk (IEEE 1789)



Converging Optical Lens Maximising LOR



Ceiling Safe

## Reduced Glare

### AVAILABLE OPTIONS

FITTURE COLOUR OPTIONS	Trim Colour Options	Reflector Colour Options				
		MATT WHITE RAL9003	MATT BLACK RAL9011	CHROME	CHROME BLACK	CHROME GOLD
MATT WHITE RAL9003						
MATT BLACK RAL9011						

ACCESSORIES
<p>*IP54 seal accessory is valid for fix angle fixtures only.</p> <p>***Adapter Ring accessory is necessary when paired with COIN, 35 or 50 series LED module variants.</p>
Honeycomb Anti-Glare Louvre            Soft Lens            Linear Spread Lens            Comfort Pro            IP54            Adapter Ring

LED MODULE	LED Module Models											Beam Angles					
	100P/C	50PM/CM	50P/C	35P	50N	35N	COIN	35P-HI	50N-HI	35N-HI	COIN-HI	10°	12°	20°	35°	60°	
<p>SINGLE CCT</p> 2700K            3000K            3500K            4000K            5000K            ProART            ProART98	100P / 100C																
	50PM / 50CM / 50P / 50C / 35P / 50N / 35N / COIN											✓	✓	✓	✓	✓	
	35P-HI / 50N-HI / 35N-HI / COIN-HI																
	35P / 50N																
	100P																
	50P / 35P / 50N / 35N / COIN																
ComfySHIFT																	
WARM DIM																	
tuneWHITE																	
flexiK																	
RGBW																	

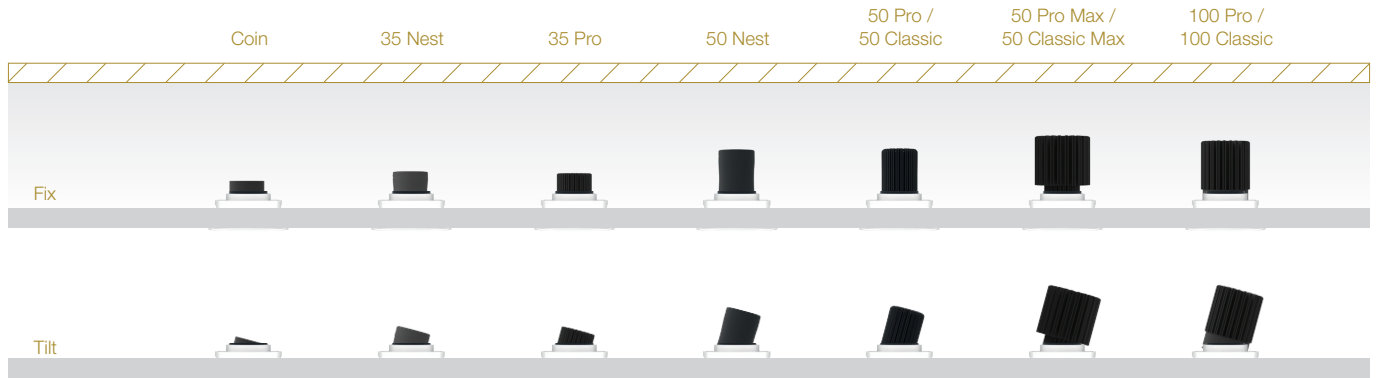
DRIVER DIMMING
DIMMABLE            PHASE            0-10V            DALI

# VECO 4

#ROUND  
#FIX  
#TILT  
#TRIM  
#TRIMLESS

## SPECIFICATIONS

<b>FIXTURE</b>	
Family Type	Veco series
Fixture Colours	Matt white, matt black
Reflector Colours	Matt white, matt black, chrome, chrome black, chrome gold
Fixture Materials	Aluminium
Accessories	Honeycomb anti-glare louvre, soft lens, linear spread lens, Comfort Pro, IP54 seal
Ingress Protection	IP40, IP54
<b>LED MODULE &amp; DRIVER</b>	
Compatible LED Modules	100, 50, 35, COIN series LED modules
Lifetime	Up to 50,000 hours L80 lamp life with LM80 tested LED chip packages
Beam Angles	10°, 12°, 20°, 35°, 60°
Colour Temperatures	2700K, 3000K, 3500K, 4000K, 5000K, ComfySHIFT, Warm Dim, tuneWHITE, flexiK, RGBW
CRI	High Efficiency (CRI~85), ProART (CRI~95), ProART98 (CRI~98)
Driver (Dimming)	Non-dim, phase (leading & trailing edge), 0-10V, DALI



DIMENSIONS (MM)		Height (h)		Module	Height (h)		Height increase with accessories: Anti-Glare Louvre : Height +6 Soft Lens : Height +3 Linear Spread Lens : Height +3 Comfort Pro : Height +20  (refer to module driver dimensions)
ROUND		Fix	Tilt		Fix	Tilt	
	Trim: Ø105 Trimless: Ø99 cutout	Trim: Ø114	Trimless: Ø99	100P / 100C:	139	145	
				50PM / 50CM:	136	141	
				50P / 50C:	122	125	
				50N:	119	122	
				35P / 35N:	93	99	
				COIN:	69	78	
				50N-HI:	129	132	
				35N-HI / 35P-HI:	103	109	
				COIN-HI:	79	88	

# VECO 4

## PHOTOMETRICS

### 100 PRO

Height (m)		Emax (lx)			
		12°	20°	35°	60°
1	E(0°)	12888	10027	5219	2750
	Cone Ø (m)	0.27	0.41	0.70	1.09
2	E(0°)	3222	2507	1305	688
	Cone Ø (m)	0.53	0.82	1.40	2.17
3	E(0°)	1432	1114	580	306
	Cone Ø (m)	0.80	1.23	2.10	3.26
4	E(0°)	805	627	326	172
	Cone Ø (m)	1.07	1.64	2.80	4.34
5	E(0°)	516	401	209	110
	Cone Ø (m)	1.33	2.05	3.50	5.43

Correction Factor: 100P - f = 1.00  
100C - f = 0.69

ELR LED Module				100P	100C	
LED Power				23W	17W	
System Power				28W	21W	
Luminous Flux (lm)	Type	Beam Angle	CRI			
			High Efficiency Ra-85	ProART Ra-95		
	Single CCT (3000K)	12°	20°	High Efficiency Ra-85	2490	1710
				ProART Ra-95	2117	1453
				ProART98 Ra-98	1743	1197
		High Efficiency Ra-85		2820	1936	
		ProART Ra-95		2397	1646	
		ProART98 Ra-98		1974	1355	
	35°	High Efficiency Ra-85	2880	1978		
		ProART Ra-95	2448	1681		
		ProART98 Ra-98	2016	1384		
	60°	High Efficiency Ra-85	2880	1978		
ProART Ra-95		2448	1681			
ProART98 Ra-98	2016	1384				

Data are based on 3000K (ProART CRI-95). Nominal data of 2700K and 3500K are shared with 3000K. Higher CCT of 4000K and 5000K will have a nominal data value of 5% higher than published. (f = 1.05) High Efficiency CRI-85 will have a nominal data value of 15% higher than published. (f = 1.17) ProART98 CRI-98 will have a nominal data value of 18% lower than published. (f = 0.82)

Nominal CRI-85, equals to Ra>80-87, R9>0  
Nominal CRI-95, equals to Ra>90-97, R9>50  
Nominal CRI-98, equals to Ra>97-99, R9>93

### 100 PRO WARM DIM

Height (m)		Emax (lx)			
		12°	20°	35°	60°
1	E(0°)	11119	8650	4503	2373
	Cone Ø (m)	0.27	0.41	0.70	1.09
2	E(0°)	2780	2163	1126	593
	Cone Ø (m)	0.53	0.82	1.40	2.17
3	E(0°)	1235	961	500	264
	Cone Ø (m)	0.80	1.23	2.10	3.26
4	E(0°)	695	541	281	148
	Cone Ø (m)	1.07	1.64	2.80	4.34
5	E(0°)	445	346	180	95
	Cone Ø (m)	1.33	2.05	3.50	5.43

ELR LED Module				100P
LED Power				23W
System Power				28W
Luminous Flux (lm)	Type	Beam Angle	CRI	
				Warm Dim (3100K)
	ProART Ra-95	12°	1826	
		20°	2068	
		35°	2112	
60°		2112		

Data are based on maximum output at 3100K. Nominal CRI-95, equals to Ra>90-97, R9>50

# VECO 4

## PHOTOMETRICS

### 100 PRO tuneWHITE/flexiK



		Height (m)	Emax (lx)			ELR LED Module				100P		
			20°	35°	60°	LED Power		System Power		Luminous Flux (lm)	Type	Beam Angle
1	E(0°)	7471	3889	2049	23W		28W		tuneWHITE/flexiK (4000K / 6500K)			
	Cone Ø (m)	0.41	0.70	1.09	23W		28W			35°	1824	
2	E(0°)	1868	972	512	23W		28W		tuneWHITE/flexiK (4000K / 6500K)			60°
	Cone Ø (m)	0.82	1.40	2.17	23W		28W			60°	1824	
3	E(0°)	830	432	228	23W		28W		tuneWHITE/flexiK (4000K / 6500K)			20°
	Cone Ø (m)	1.23	2.10	3.26	23W		28W			35°	1824	
4	E(0°)	467	243	128	23W		28W		tuneWHITE/flexiK (4000K / 6500K)			60°
	Cone Ø (m)	1.64	2.80	4.34	23W		28W			60°	1824	
5	E(0°)	299	156	82	23W		28W		tuneWHITE/flexiK (4000K / 6500K)			20°
	Cone Ø (m)	2.05	3.50	5.43	23W		28W			35°	1824	

Data are based on maximum output at highest CCT (4000K / 6500K).  
2700K will have a nominal data value of 10% lower than published. (f = 0.90)  
1800K will have a nominal data value of 30% lower than published. (f = 0.70)  
Nominal CRI-95, equals to Ra>90-97, R9>50

### 100 PRO RGBW



		Height (m)	Emax (lx)		ELR LED Module				100P		
			35°	60°	LED Power		System Power		Luminous Flux (lm)	Type	Beam Angle
1	E(0°)	2077	1095	22W		26W		RGBW			
	Cone Ø (m)	0.70	1.09	22W		26W			60°	974	
2	E(0°)	519	274	22W		26W		RGBW			60°
	Cone Ø (m)	1.40	2.17	22W		26W			60°	974	
3	E(0°)	231	122	22W		26W		RGBW			60°
	Cone Ø (m)	2.10	3.26	22W		26W			60°	974	
4	E(0°)	130	68	22W		26W		RGBW			60°
	Cone Ø (m)	2.80	4.34	22W		26W			60°	974	
5	E(0°)	83	44	22W		26W		RGBW			60°
	Cone Ø (m)	3.50	5.43	22W		26W			60°	974	

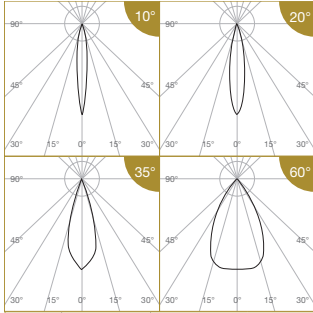
Data are based on maximum output of all 4 RGBW channels.

# VECO 4

## PHOTOMETRICS



### 50 PRO



Height (m)	E(0°)	E <sub>max</sub> (lx)			
		10°	20°	35°	60°
1	E(0°)	8185	5304	3119	1206
	Cone Ø (m)	0.19	0.34	0.60	1.15
2	E(0°)	2046	1326	780	301
	Cone Ø (m)	0.38	0.68	1.19	2.30
3	E(0°)	909	589	347	134
	Cone Ø (m)	0.57	1.03	1.79	3.45
4	E(0°)	512	331	195	75
	Cone Ø (m)	0.76	1.37	2.38	4.60
5	E(0°)	327	212	125	48
	Cone Ø (m)	0.95	1.71	2.98	5.75

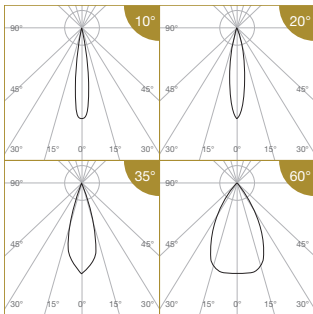
Correction Factor:  
 50P (10°) - f = 1.00    50P (20°, 35°, 60°) - f = 1.00  
 50C (10°) - f = 0.78    50C (20°, 35°, 60°) - f = 0.80  
 35P (10°) - f = 0.62    35P (20°, 35°, 60°) - f = 0.71  
 50N (10°) - f = 0.58    50N (20°, 35°, 60°) - f = 0.63  
 35N (10°) - f = 0.42    35N (20°, 35°, 60°) - f = 0.47  
 COIN (10°) - f = 0.35    COIN (20°, 35°, 60°) - f = 0.38  
 50PM (10°) - f = 1.69    50PM (20°, 35°, 60°) - f = 1.73  
 50CM (10°) - f = 1.37    50CM (20°, 35°, 60°) - f = 1.40  
 50P-24CV (10°) - f = 0.75    50P-24CV (20°, 35°, 60°) - f = 0.70  
 50C-24CV (10°) - f = 0.62    50C-24CV (20°, 35°, 60°) - f = 0.57  
 35P-24CV (10°) - f = 0.48    35P-24CV (20°, 35°, 60°) - f = 0.49  
 COIN-24CV (10°) - f = 0.28    COIN-24CV (20°, 35°, 60°) - f = 0.27

ELR LED Module				50P	50C	35P	50N	35N	COIN	50PM	50CM
LED Power				12W	10W	8W	7.5W	5.5W	4.5W	21W	17W
System Power				15.2W	12.8W	11W	10W	7.5W	6W	25W	21W
Luminous Flux (lm)	Type	Beam Angle	CRI								
	Single CCT (3000K)	10°	High Efficiency Ra-85	1079	847	672	623	457	374	1826	1477
			ProART Ra-95	917	720	572	530	388	318	1552	1256
			ProART98 Ra-98	755	593	471	436	320	261	1278	1034
		20°	High Efficiency Ra-85	1395	1116	995	884	651	530	2418	1953
			ProART Ra-95	1186	949	846	751	553	451	2055	1660
			ProART98 Ra-98	977	781	697	618	456	371	1693	1367
	35°	High Efficiency Ra-85	1410	1128	1006	893	658	536	2444	1974	
		ProART Ra-95	1199	959	855	760	559	456	2077	1678	
		ProART98 Ra-98	987	790	704	625	461	375	1711	1382	
	60°	High Efficiency Ra-85	1440	1152	1027	912	672	547	2496	2016	
ProART Ra-95		1224	979	874	776	571	466	2122	1714		
ProART98 Ra-98		1008	806	719	638	470	383	1747	1411		
Input Power (24CV)				12W	10W	8W			4.5W		
Luminous Flux (lm)	Type	Beam Angle	CRI								
	24CV Single CCT (3000K)	10°	High Efficiency Ra-85	805	664	523				307	
			ProART Ra-95	685	564	445				261	
			ProART98 Ra-98	564	465	366				215	
		20°	High Efficiency Ra-85	977	800	688				381	
			ProART Ra-95	830	680	585				325	
			ProART98 Ra-98	684	560	482				267	
	35°	High Efficiency Ra-85	987	808	696				385		
		ProART Ra-95	839	687	591				328		
		ProART98 Ra-98	691	566	487				270		
	60°	High Efficiency Ra-85	1008	826	710				394		
ProART Ra-95		857	702	604				335			
ProART98 Ra-98		706	578	497				276			

Data are based on 3000K (ProART CRI-95). Nominal data of 2700K and 3500K are shared with 3000K. Higher CCT of 4000K and 5000K will have a nominal data value of 5% higher than published. (f = 1.05)  
 High Efficiency CRI-85 will have a nominal data value of 15% higher than published. (f = 1.17)  
 ProART98 CRI-98 will have a nominal data value of 18% lower than published. (f = 0.82)

Nominal CRI-85, equals to Ra>80-87, R9>0  
 Nominal CRI-95, equals to Ra>90-97, R9>50  
 Nominal CRI-98, equals to Ra>97-99, R9>93

### 35 PRO ComfySHIFT



Height (m)	E(0°)	E <sub>max</sub> (lx)			
		10°	20°	35°	60°
1	E(0°)	4295	3536	2079	804
	Cone Ø (m)	0.27	0.34	0.60	1.15
2	E(0°)	1074	884	520	201
	Cone Ø (m)	0.53	0.68	1.19	2.30
3	E(0°)	477	393	231	89
	Cone Ø (m)	0.80	1.03	1.79	3.45
4	E(0°)	268	221	130	50
	Cone Ø (m)	1.07	1.37	2.38	4.60
5	E(0°)	172	141	83	32
	Cone Ø (m)	1.33	1.71	2.98	5.75

Correction Factor: 35P CS - f = 1.00  
 50N CS - f = 0.94

ELR LED Module				35P	50N
LED Power				8W	7.5W
System Power				11W	10W
Luminous Flux (lm)	Type	Beam Angle	CRI		
	ComfySHIFT (3100K)	10°	ProART Ra-95	706	664
				791	744
				799	752
				816	768

Data are based on maximum output at 3100K.  
 Nominal CRI-95, equals to Ra>90-97, R9>50

# VECO 4

## PHOTOMETRICS



### 50 PRO WARM DIM

Height (m)	Emax (lx)	ELR LED Module				
		50P	35P	50N	35N	COIN
1	E(0°)	6469	5325	3131	1211	
	Cone Ø (m)	0.27	0.34	0.60	1.15	
2	E(0°)	1617	1331	783	303	
	Cone Ø (m)	0.53	0.68	1.19	2.30	
3	E(0°)	719	592	348	135	
	Cone Ø (m)	0.80	1.03	1.79	3.45	
4	E(0°)	404	333	196	76	
	Cone Ø (m)	1.07	1.37	2.38	4.60	
5	E(0°)	259	213	125	48	
	Cone Ø (m)	1.33	1.71	2.98	5.75	

Luminous Flux (lm)	Type	Beam Angle	CRI	ELR LED Module				
				50P	35P	50N	35N	COIN
Luminous Flux (lm)	Warm Dim (3100K)	10°	ProART Ra~95	12W	8W	7.5W	5.5W	4.5W
		20°		15.2W	11W	10W	7.5W	6W
		35°		1062	706	664	490	398
		60°		1190	791	744	549	446
				1203	799	752	555	451
				1229	816	768	566	461

Data are based on maximum output at 3100K.  
Nominal CRI~95, equals to Ra>90~97, R9>50

Correction Factor: 50P WD - f = 1.00  
35P WD - f = 0.66  
50N WD - f = 0.63  
35N WD - f = 0.46  
COIN WD - f = 0.38

### 50 PRO tuneWHITE/flexiK

Height (m)	Emax (lx)	ELR LED Module		
		50P	50N	COIN
1	E(0°)	4160	2446	946
	Cone Ø (m)	0.34	0.60	1.15
2	E(0°)	1040	612	236
	Cone Ø (m)	0.68	1.19	2.30
3	E(0°)	462	272	105
	Cone Ø (m)	1.03	1.79	3.45
4	E(0°)	260	153	59
	Cone Ø (m)	1.37	2.38	4.60
5	E(0°)	166	98	38
	Cone Ø (m)	1.71	2.98	5.75

Luminous Flux (lm)	Type	Beam Angle	CRI	ELR LED Module		
				50P	50N	COIN
Luminous Flux (lm)	tuneWHITE/flexiK (4000K / 6500K)	20°	ProART Ra~95	12W	7.5W	4.5W
		35°		15.2W	10W	6W
		60°		930	558	335
				940	564	338
				960	576	346

Data are based on maximum output at highest CCT (4000K / 6500K).  
2700K will have a nominal data value of 10% lower than published. (f = 0.90)  
1800K will have a nominal data value of 30% lower than published. (f = 0.70)  
Nominal CRI~95, equals to Ra>90~97, R9>50

Correction Factor: 50P TW / FK - f = 1.00  
50N TW / FK - f = 0.60  
COIN TW / FK - f = 0.36

### 50 PRO RGBW

Height (m)	Emax (lx)	ELR LED Module			
		50P			
1	E(0°)	1480	572		
	Cone Ø (m)	0.60	1.15		
2	E(0°)	370	143		
	Cone Ø (m)	1.19	2.30		
3	E(0°)	164	64		
	Cone Ø (m)	1.79	3.45		
4	E(0°)	93	36		
	Cone Ø (m)	2.38	4.60		
5	E(0°)	59	23		
	Cone Ø (m)	2.98	5.75		

Luminous Flux (lm)	Type	Beam Angle	CRI	ELR LED Module	
				50P	
Luminous Flux (lm)	RGBW	35°	N/A	12W	
		60°		15.2W	
				569	
				581	

Data are based on maximum output of all 4 RGBW channels.

### 35 PRO HIGH INTENSITY

Height (m)	Emax (lx)	ELR LED Module				
		35P-HI	50N-HI	35N-HI	COIN-HI	
1	E(0°)	10860				
	Cone Ø (m)	0.19				
2	E(0°)	2715				
	Cone Ø (m)	0.37				
3	E(0°)	1207				
	Cone Ø (m)	0.56				
4	E(0°)	679				
	Cone Ø (m)	0.74				
5	E(0°)	434				
	Cone Ø (m)	0.93				

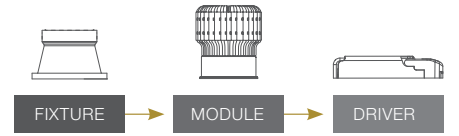
Luminous Flux (lm)	Type	Beam Angle	CRI	ELR LED Module				
				35P-HI	50N-HI	35N-HI	COIN-HI	
Luminous Flux (lm)	Single CCT (3000K)	10°	High Efficiency Ra~85	8W	7.5W	5.5W	4.5W	
				11W	10W	7.5W	6W	
				587	552	405	329	
				499	469	344	280	
			ProART98 Ra~98	411	386	284	231	

Correction Factor: 35P-HI - f = 1.00  
50N-HI - f = 0.94  
35N-HI - f = 0.69  
COIN-HI - f = 0.56



# VECO 4

MODULAR CONCEPT



## ORDERING MATRIX CHART

Fixture													
Type	Trim Options		Shape		Angle		Colour		Reflector Colour		Accessories		
VECO-4	T	Trim	RD	Round	FX	Fix	WH	Matt White	WH	Matt White	N	None	
	X	Trimless									AGL	Anti-Glare Louvre	
											CR	Chrome	
											SL	Soft Lens	
				TL	Tilt	MB	Matt Black	MB	Matt Black	CG	Chrome Gold	LSL	Linear Spread Lens
												CP	Comfort Pro
												IP	IP54**
												ADT	Adapter Ring***

\*\*IP54 seal accessory is valid for fix angle fixtures only.

\*\*\*Adapter Ring accessory is necessary when paired with COIN, 35 or 50 series LED module variants.

Single CCT LED Module						Driver		
LED Power	Beam Angle		Colour Temp		CRI	Dimming		
ELR100P	23W	12°	27°	2700K	HE Ra~85	ND	Non-Dim	
ELR100C	17W	20°	30°	3000K	PA ProART	PH	Phase	
		35°	35°	3500K	PP ProART98	AN	0-10V	
		60°	40°	4000K		DA	DALI	
			50°	5000K				
ELR50PM	21W	10°	27°	2700K	HE Ra~85	ND	Non-Dim	
ELR50CM	17W	20°	30°	3000K	PA ProART	PH	Phase	
ELR50P	12W	35°	35°	3500K	PP ProART98	AN	0-10V	
ELR50C	10W	60°	40°	4000K		DA	DALI	
ELR35P	8W		50°	5000K				
ELR50N	7.5W							
ELR35N	5.5W							
ELRCOIN	4.5W							
ELR35P-HI	8W	NS	10°	27°	2700K	HE Ra~85	ND	Non-Dim
ELR50N-HI	7.5W			30°	3000K	PA ProART	PH	Phase
ELR35N-HI	5.5W			35°	3500K	PP ProART98	AN	0-10V
ELRCOIN-HI	4.5W			40°	4000K		DA	DALI
				50°	5000K			
ELR50P-24CV	12W	10°	27°	2700K	HE Ra~85			
ELR50C-24CV	10W	20°	30°	3000K	PA ProART			
ELR35P-24CV	8W	35°	35°	3500K	PP ProART98			
ELRCOIN-24CV	4.5W	60°	40°	4000K				
			50°	5000K				

\*Drivers for 24CV LED modules are sold separately.

ComfySHIFT LED Module						Driver	
LED Power	Beam Angle		Colour Temp		CRI	Dimming	
ELR35P	8W	10°	CS	ComfySHIFT	PA ProART	ND	Non-Dim
ELR50N	7.5W	20°					
		35°					
		60°					

example: VECO-4.T.RD.FX.WH.WH.AGL.ELR100P.35.40.PA.DA

\*Custom RAL colour options available.

Warm Dim LED Module						Driver	
LED Power	Beam Angle		Colour Temp		CRI	Dimming	
ELR100P	23W	12°	12°	WD	Warm Dim	PA	ProART
		20°	20°			PH	Phase
		35°	35°			AN	0-10V
		60°	60°			DA	DALI
ELR50P	12W	10°	10°	WD	Warm Dim	PA	ProART
ELR35P	8W	20°	20°			PH	Phase
ELR50N	7.5W	35°	35°			AN	0-10V
ELR35N	5.5W	60°	60°			DA	DALI
ELRCOIN	4.5W						

tuneWHITE LED Module						Driver	
LED Power	Beam Angle		Colour Temp		CRI	Dimming	
ELR100P	23W	20°	20°	TW1831	tuneWHITE 1800K-3100K	PA	ProART
ELR50P	12W	35°	35°	TW1840	tuneWHITE 1800K-4000K		
ELR50N	7.5W	60°	60°	TW2765	tuneWHITE 2700K-6500K	DA	DALI
ELRCOIN	4.5W						

flexiK LED Module						Driver	
LED Power	Beam Angle		Colour Temp		CRI	Dimming	
ELR100P	23W	20°	20°	FK##	flexiK	PA	ProART
ELR50P	12W	35°	35°			PH	Phase
ELR50N	7.5W	60°	60°			AN	0-10V
ELRCOIN	4.5W					DA	DALI

## denotes the first two digits of preferred CCT ranging from 1800K to 6500K by increment of 100K.

RGBW LED Module					
LED Power	Beam Angle		Colour Temp		
ELR100P	22W	35°	35°	RGBW	Red, Green, Blue, White
ELR50P	12W	60°	60°		

\*Drivers for RGBW LED modules are sold separately.